

QUESTIONNAIRE / BIG BAG EMPTYING AND FILLING SYSTEM

PRODUCT CHARACTERISTICS:

- Free flowing flowing
- Poor flowability hygroscopic
- bridging abrasive
- binding aggressive
- adhesive dusty
- toxic

PRODUCT INFORMATION:

- Product Designation :
- Bulk density (kg/l) :
- Moisture content(% H₂O)
- Temperature (°C) :
- Repose angle :
- Particle size (mm) :

Suspension Mode

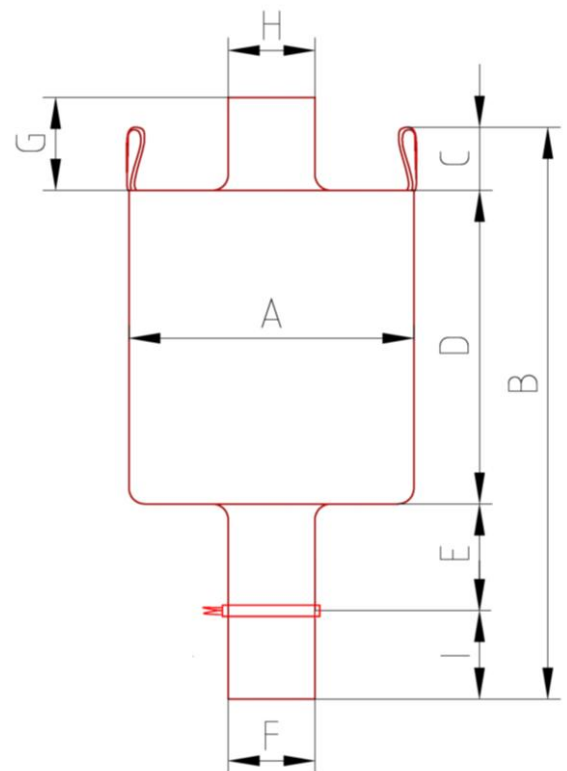
- 4 individual loops
- 2 continuous loops
- without loops

Inliner

- without Inliner
- purpose-built inliner
- Outlet Ø: outlet length: mm
- Inliner non-customized

Big Bag Dimensions

- A: mm B: mm C: mm
- D: mm E: mm F: mm
- G: mm H: mm I: mm
- Max weight of big bag : kg
- Room height: mm



Technical features:

- Power: Volt Ph, Hz
- Protection classification: IP.....
- Compressed air: bar
- Materials in contact with the product:
- Discharge capacity (bags/h):
- Existing dust-cleaning system: yes no
- Place/Date:

- ADF& protection (zone):
- Other parts:
- Sand blasting SA 2,5: yes no
- Signature:

N:\Bibliothèque\Documents commerciaux\Questionnaires\Questionnaires\Big Bag E&F.GB 15.10.12/LDI