



## Micronizing **MC Jetmill® 50**

- Hundreds of installations worldwide
- The most advanced micronizers on the market
- Effective with more products than any other available today
- Highly efficient single pass processing
- Working with 1000s of compounds
- Including sticky and abrasive products
- Scalable product range
- Accurate reproduction from development to production

## MC Jetmill® 50



The versatile and compact MC 50 is designed to satisfy the needs of laboratories and small scale manufacturing.

### Technical features

- **High grade materials** – AISI type 316L stainless steel mirror polished to Ra 0.25 microns or Hastelloy
- **Rapid cleaning and easy validation** – Ease and quickness in assembling and disassembling, as well as a limited number of components
- **The simplicity of the whole unit** – Total absence of screws (replaced by tri-clover connections), no crevices, smooth and regular surfaces

### Very low production loss

- Typical yields are 99.5% of batch size. virtual removal of the blow back phenomenon.
- Limited caking of sticky powders
- A single collecting point – (dimensional homogeneity)

### Further advantages

- The lowest consumption of process gas of similarly sized units available on the market
- Process at constant temperature (endothermic)
- No heat generation
- Easy scale up maintaining the same PSD (Particle size distribution).

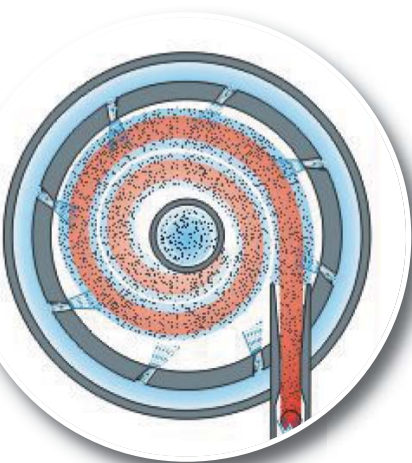
### Options:

- Volumetric or Gravimetric pharma execution feeder, with various hopper dimensions available.
- Special internal lining: PTFE, PUR (Volkollan), Ceramic, titanium Nitride.
- Sanitary rotary valve for production collection.
- CIP and SIP systems.
- Explosion proof systems (10 bars pressure resistant or burst disk).
- System fully automated by PLC.

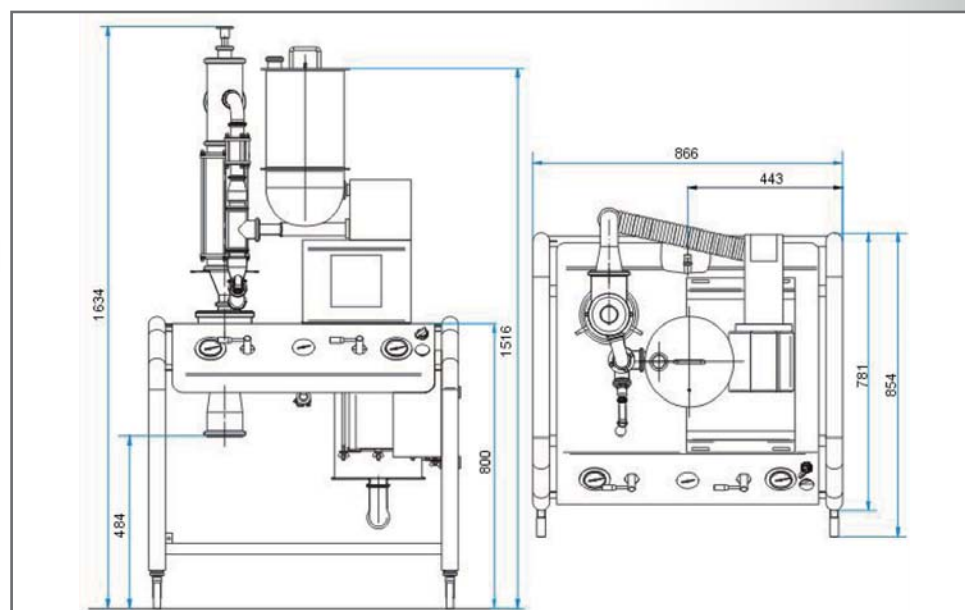
### Alternative Version

Simplified version based on the same pharma concept can be customized for other applications:

- Fine chemicals
- Cosmetics
- Food



### Dimensions



### Technical Data

Nominal diameter	Estimated capacity	Batch size	Process gas @ 7 bar	Process gas @ 12 bar	Installed power
100 mm (4 inches)	From 0.05 to 5.0 kg/hr	3 g to 20 kg	0.412 Nm <sup>3</sup> /min (14.55 CFM)	0.706 Nm <sup>3</sup> /min (24.93 CFM)	0.25 kW (0.33 HP)